

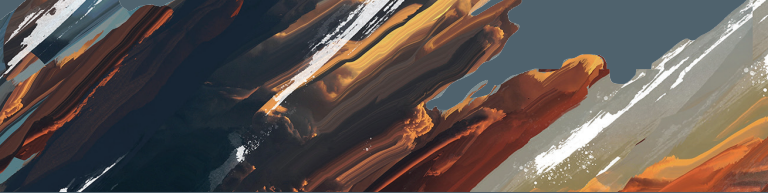


THE BLOOD OF THE LAMB

The 10th Plague & The Passover

REFLECT | Week 4 | Exodus 12–13

1. What sacred moments from the Church year do you cherish (like Advent, Lent, Communion)? What makes these special? In our passages for this week, we connect to the sacrament of Communion. Look for this as we go along.
2. Read Exodus 12:12–13. Note the distinction between Israel and Egypt is based exclusively on the blood of the lamb over one's doorpost. Why would someone place the blood over their doorpost? What did the "sign" mean?
3. Read Exodus 12:11. Notice how Israel was called to eat of the lamb. Now read Luke 12:35–36. Here, Jesus uses the same language found in Exodus 12:11 and calls His disciples to do the same. What does this mean for us today?
4. Read John 1:29, Luke 22:7–22, and 1 Corinthians 5:7–8. What do these passages have in common? In Exodus how was God foreshadowing the coming of Jesus into our lives?



5. Does knowing Jesus is our Passover Lamb impact your Communion experience? Why or why not?

RESPOND | Have you ever asked Jesus to be at the center of your heart and over the doorposts of your life? What does this mean to you? If Jesus is indeed the center of your life, discuss the moment or experiences that led you to this conclusion. If you are not sure, that is okay! Keep thinking. Take a moment to ask your questions. This is one of the most significant questions you will ever ponder. What keeps you from putting Jesus at the center of your life and joining around the table of God?

READ | Exodus 11–13